



Engineering a better future.

Forward-looking Statements and Disclaimer

This Environmental, Social and Governance (“ESG”) Progress Report covers the period from January 1, 2025, to December 31, 2025. In this report, “we”, “us”, “Mattr”, and “the Company” refer to Mattr Corp.

This report includes certain statements that may constitute forward-looking information within the meaning of applicable securities laws. Words such as “may”, “will”, “should”, “anticipate”, “plan”, “expect”, “believe”, “predict”, “estimate”, “intend”, or variations of these words or other similar expressions or terminology are used to identify forward-looking information. In addition, any statement concerning future performance, ongoing strategies or prospects, and possible actions taken by the Company are also forward-looking information. Forward-looking statements in this report include, but are not limited to: the expected financial performance of the Company; the end markets expected to have the highest long-term demand profile; the production capacity and efficiency expected from the Company’s newest production facilities in Texas, South Carolina, Ohio and Ontario; anticipated safety performance; expectations related to long-term profitable growth and long-term value creation; and the Company’s future ESG reporting practices. Forward-looking information involves known and unknown risks, uncertainties, and other factors which may cause actual results, performance, outcomes, or achievements to be materially different from those predicted, expressed, or implied by the forward-looking information. Additional information on the risks and uncertainties on the Company’s business can be found in the Company’s most recent Annual Information Form, annual and quarterly reports, and in other reports and filings made with the applicable Canadian securities regulatory authorities and available at [sedarplus.ca](https://www.sedarplus.ca) and [mattr.com](https://www.mattr.com).

The forward-looking information in this report is based on assumptions, estimates, and analysis made in the light of the Company’s experience and its perception of trends, current conditions, and expected developments, as well as other factors that are believed by the Company to be reasonable and relevant in the circumstances.

The forward-looking information is provided as of the date of this report and the Company does not assume any obligation to update or revise the forward-looking information to reflect events or circumstances, except as required by law.

Forward-looking information related to ESG matters contained in this report are based on certain key estimates and assumptions and are subject to risks and uncertainties, both known and unknown, including but not limited to: our ability to successfully implement our strategic priorities and whether they will yield the expected benefits (or on their anticipated timelines), the Company’s plans and strategies to improve ESG performance and mitigate ESG-related risks, the availability of current technologies or technologies that are anticipated to be available are sufficient to support the Company’s ESG priorities, and the availability of data, samples, and information necessary to develop and evaluate the Company’s programs and strategies. In addition, many of the standards and metrics used in preparing this report, including any underlying data and systems used to collect, prepare, and present such metrics, continue to evolve and are based on expectations and assumptions believed to be reasonable at the time of preparation, but should not be considered guarantees.

Certain ESG-related statements may be based on expectations and assumptions that are necessarily uncertain and may be prone to error or subject to misinterpretation given the long timelines involved and the lack of an established single approach to identifying, measuring, and reporting on many ESG matters. Calculations and statistics included in ESG-related statements may be based on historical

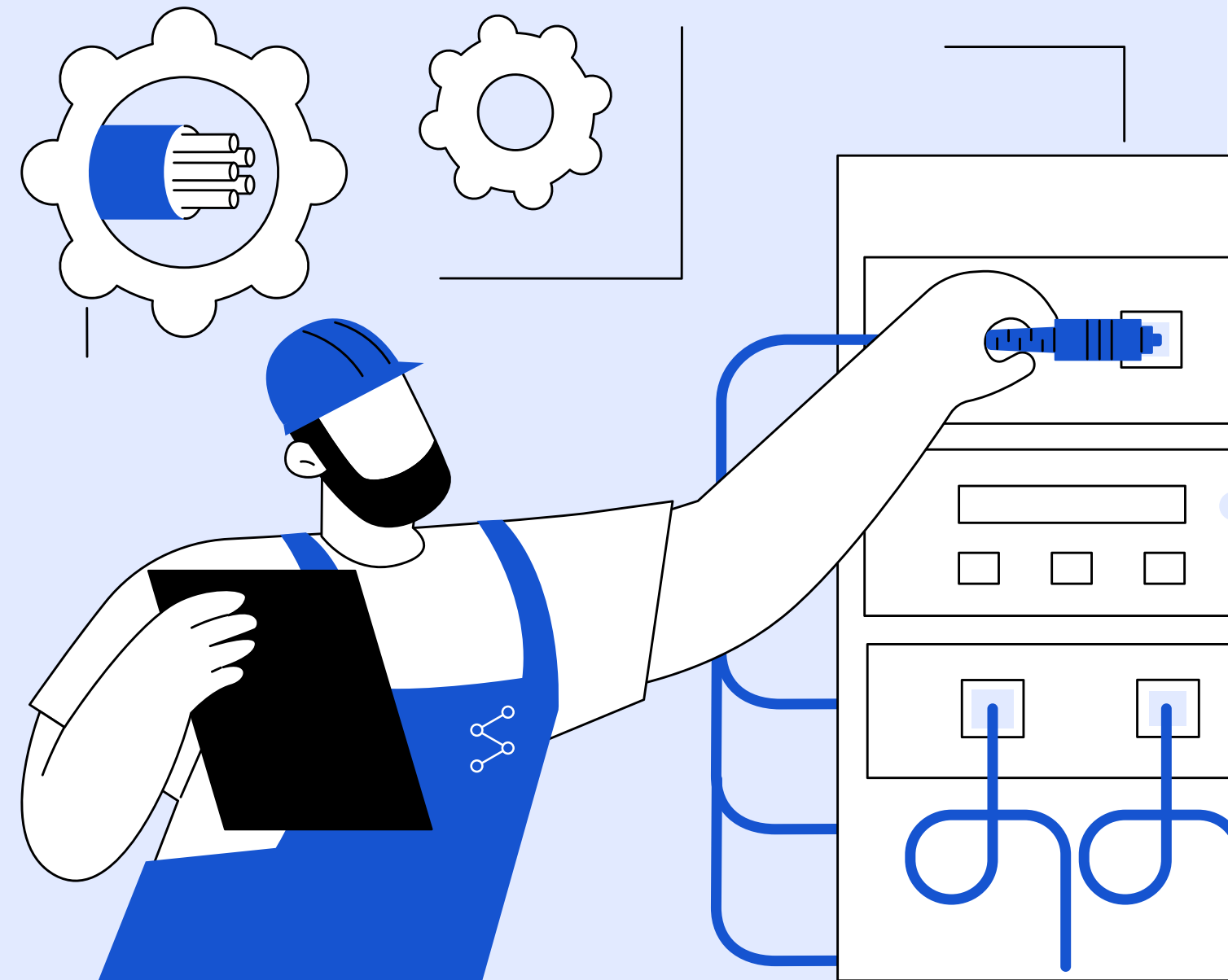
estimates, assumptions, and projections and therefore subject to change. The metrics used, and the expectations and assumptions they are based on, have not been externally assured or verified by any independent third-party. Moreover, our disclosures based on standards, including the International Financial Reporting Standards (“IFRS”) Sustainability Standards and the Sustainability Accounting Standards Board (“SASB”) standards, may change due to revisions in framework requirements, availability of information, timelines involved, changes in our industry and/or business or applicable governmental policies, rules or regulations, or other factors, some of which may be beyond our control.

In addition to any assumptions and other factors referred to specifically in connection with the forward-looking statements, factors that could cause our actual results to differ materially from those contemplated in any forward-looking statement include, among others: socio-demographic and economic trends, energy prices, access to such energy sources and the availability of alternatives, technological innovations, climate-related conditions and weather events, climate change-related impacts on our business, operations or the industries in which we and our customers operate, legislative and regulatory changes, our ability to gather and verify data regarding environmental impacts, and other unforeseen events or conditions.

This report contains matters that may be considered significant by the Company. However, such matters may not be considered “material” to the Company for the purposes of complying with applicable securities laws and other regulations. Additionally, inclusion or absence of information in the Company’s ESG-related statements should not be construed to represent any belief regarding the materiality or financial impact of that information. Given the uncertainties and assumptions required to make certain disclosures in this report, and the timelines involved, materiality is inherently difficult to assess for distant future periods.

Table of Contents

- 02** Forward-looking Statements and Disclaimer
- 04** Mattr at a Glance
- 05** Letter from the CEO
- 06** Reporting Scope and Boundaries
- 08** Governance
- 09** Risk Management
- 11** Data Tables



Mattr at a Glance

Mattr is a global materials technology company enabling renewal and expansion of critical infrastructure.

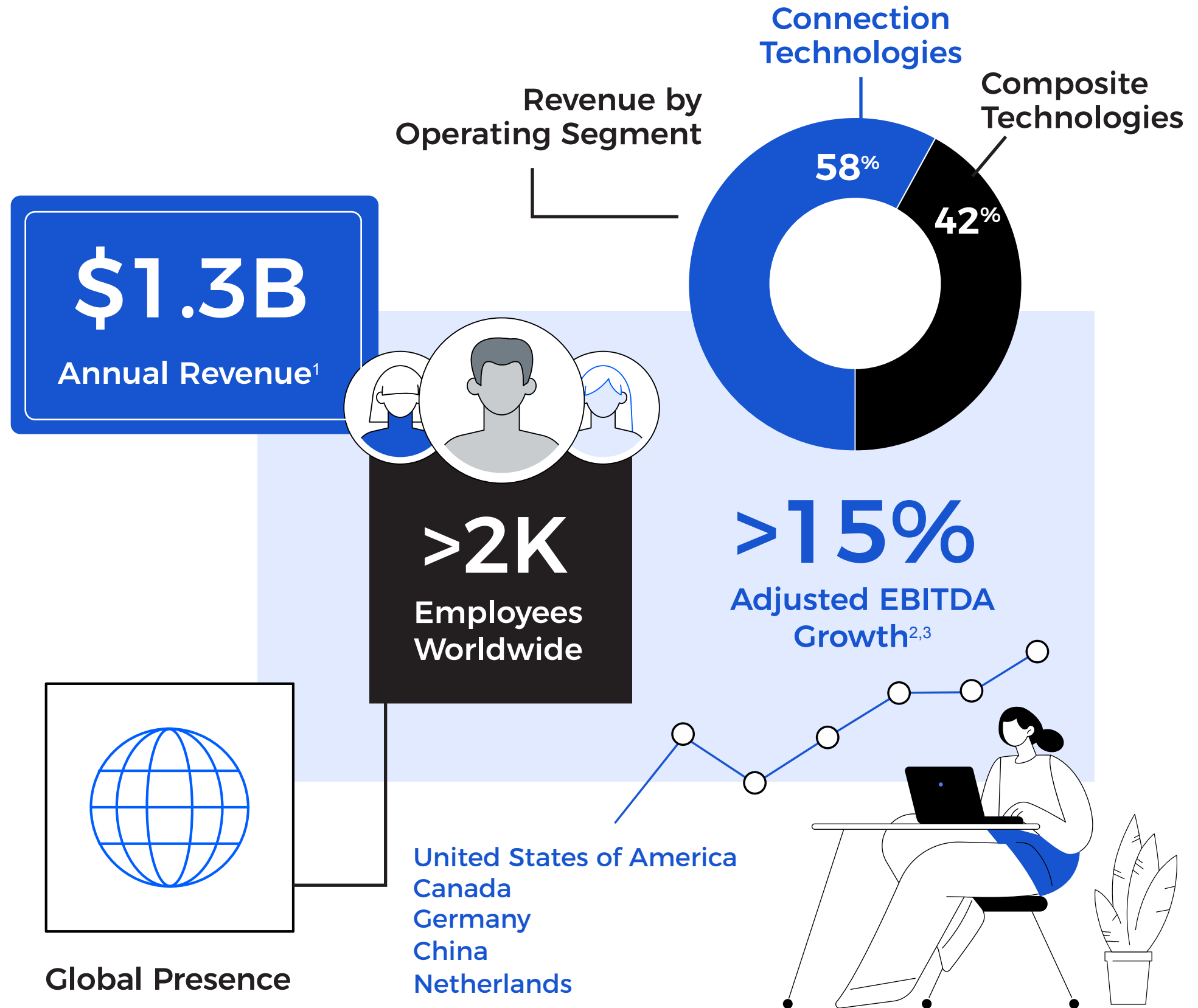
We deliver advanced material technology and complex manufacturing expertise through our two business segments, **Connection Technologies** and **Composite Technologies**, which operate a global network of manufacturing and technology centers.

Mattr Corp. is publicly traded on the Toronto Stock Exchange. [Mattr's 2025 Annual Information Form](#), filed on SEDAR+, details the Company's principal subsidiaries and affiliates.

1. Consolidated Annual Revenue for the fiscal year ended December 31, 2025.

2. Adjusted EBITDA Compound Annual Growth Rate (CAGR) from 2021-2025; fiscal year end as of December 31, 2025.

3. Adjusted EBITDA is a non-GAAP measure. Non-GAAP measures do not have standardized meanings under GAAP and are not necessarily comparable to similar measures provided by other companies. Refer to Fourth Quarter MD&A for further details.



Letter from the CEO

2025 was a pivotal year for Mattr, defined by successful execution of key strategic actions, completion of our North American manufacturing footprint reconfiguration, progressive improvement of operational performance, and continued investment in technology, systems, and people.

In parallel, our teams navigated rapidly evolving geopolitical and business conditions throughout the year, working together to position our businesses for long-term profitable growth.

Above all else, the resilience of Mattr's talented teams around the globe shone through in 2025. Across the company, we strengthened processes, removed friction where it held us back, and focused our portfolio on the best positioned businesses for sustainable, long-term value creation.

Early in the year, we welcomed the AmerCable business and its energetic and committed workforce into our portfolio. This highly accretive transaction added another strong leadership team and highly respected product suite to our company. AmerCable's capabilities in high

performance, low- and medium-voltage cable and assemblies enhanced our ability to support customers across electrification, mining, energy, and industrial markets. Later in the year, we divested our Thermotite do Brazil business - the final step in our multi-year process to simplify our company and to concentrate our focus and resources on those end markets which we believe have the highest, long-term, demand profile.

During 2025, our teams also continued to build proficiency and maturity across our newest production facilities in Rockwall, Texas; Blythewood, South Carolina; Fairfield, Ohio; and Vaughan, Ontario. Each of these new sites were designed with efficiency and safety in mind, enabling improved production workflows and reduced resource intensity over time. Exiting the year, all four sites were positioned to progressively grow capacity and efficiency in support of long-term demand for our products serving critical infrastructure renewal and enhancement.

In compliance with recent regulatory evolution, including under Canada's Competition Act, we have ensured our disclosures remained grounded in data. Our commitment is to continue transparently disclosing our performance while improving data controls within our emissions and energy reporting systems and adhering to the evolving regulatory environment.

While data and systems are important, it is our people who drive our performance and culture. Across our manufacturing sites and offices, teams embraced a more streamlined, accountable way of working. We continued to strengthen our safety culture, build frontline

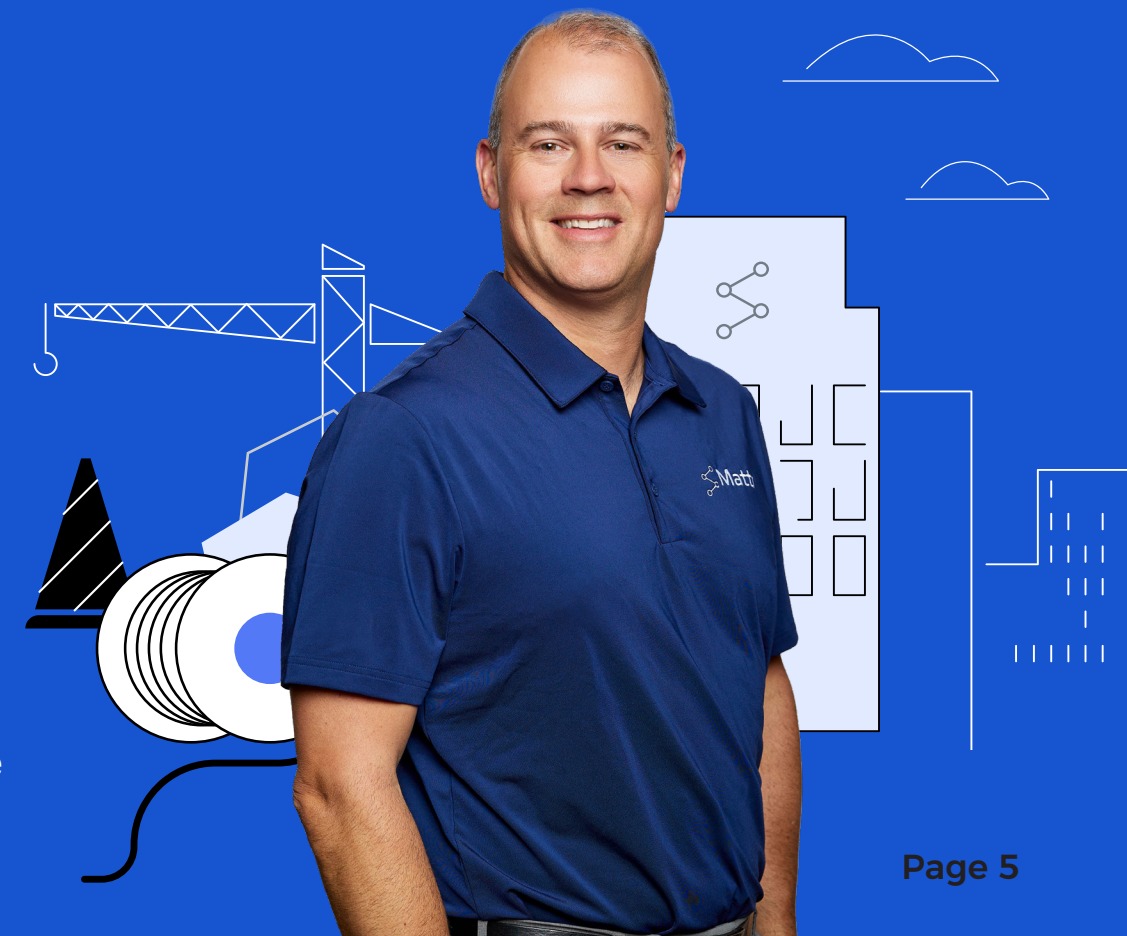
capability, and invest in employee development. Looking ahead, we will continue to focus on the fundamentals - executing for our customers, simplifying how we work, and strengthening the culture that makes Mattr a great place to build a career.

Thank you to every member of the Mattr team for your discipline, dedication, and collaboration throughout 2025. Your work continues to build momentum for the years ahead. To our customers, partners, shareholders, and communities - thank you for your trust. Together, we are building a stronger Mattr.



Michael Reeves

President and Chief Executive Officer



Reporting Scope and Boundaries

This report is Mattr’s seventh annual ESG progress report. This report complements our 2025 business performance and financial results, which can be found in the [Company’s management discussion and analysis \(MD&A\)](#) for the fiscal year ended December 31, 2025.

Disclosures can also be found in our [2025 Annual Information Form](#), [Management Information Circular](#), and [2025 Annual Financial Statements](#). In addition, within our 2025 Supply Chain Transparency Report, we detail our initiatives to prevent modern slavery and child labor within our operations and supply chain, in compliance with Canada’s Fighting Against Forced Labor and Child Labor in Supply Chains Act as well as the UK Modern Slavery Act 2015.

We monitor and disclose Environmental, Social, and Governance factors that we believe are most relevant to Mattr’s operations and that align with our current understanding of industry best practices, and applicable standards and frameworks for disclosures.

Referenced Frameworks and Standards

This report details the Company’s ESG performance utilizing industry-specific disclosure recommendations and practices outlined by the SASB (Sustainability Accounting Standards Board) Standards, which is now integrated within International Financial Reporting Standards (IFRS) Sustainability Standards. Please note that referencing standards does not necessarily indicate full compliance. A SASB index is provided on [page 18](#).

This report is intended to detail actual performance without reference to future expectations.

We continue to monitor the status of potential enhancements to disclosure requirements as regulations around the globe continue to evolve. As of the date of publication, the Company is not subject to mandatory GHG emissions reporting requirements.

Report Assumptions: Financial and Performance Data

- Dollar amounts referenced in this report are in Canadian dollars unless otherwise indicated.
- The operational and environmental data and metrics presented in this report cover Mattr Corp. and our wholly owned subsidiaries worldwide as of the end of the 2025 fiscal year. Data and metrics have been restated to reflect the inclusion of AmerCable (acquired January 2025), and the exclusion of Thermotite do Brazil following divestiture (June 2025).
- Social data has not been adjusted or restated to account for acquisitions or divestitures.
- All references to employees include full-time permanent, contract personnel and part-time employees under the Company’s supervision and control.



Reporting Scope and Boundaries (cont.)

Report Assumptions: Greenhouse Gas (GHG) Emissions Data

The GHG data presented in this report was calculated based on the GHG Protocol methodology, following the operational control approach for establishing our organizational boundary.

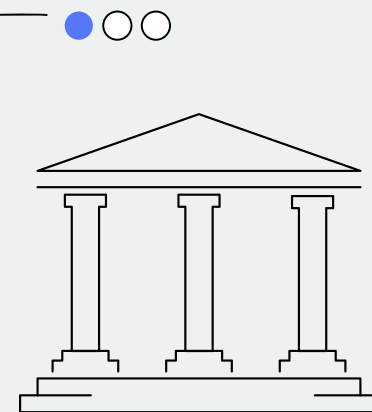
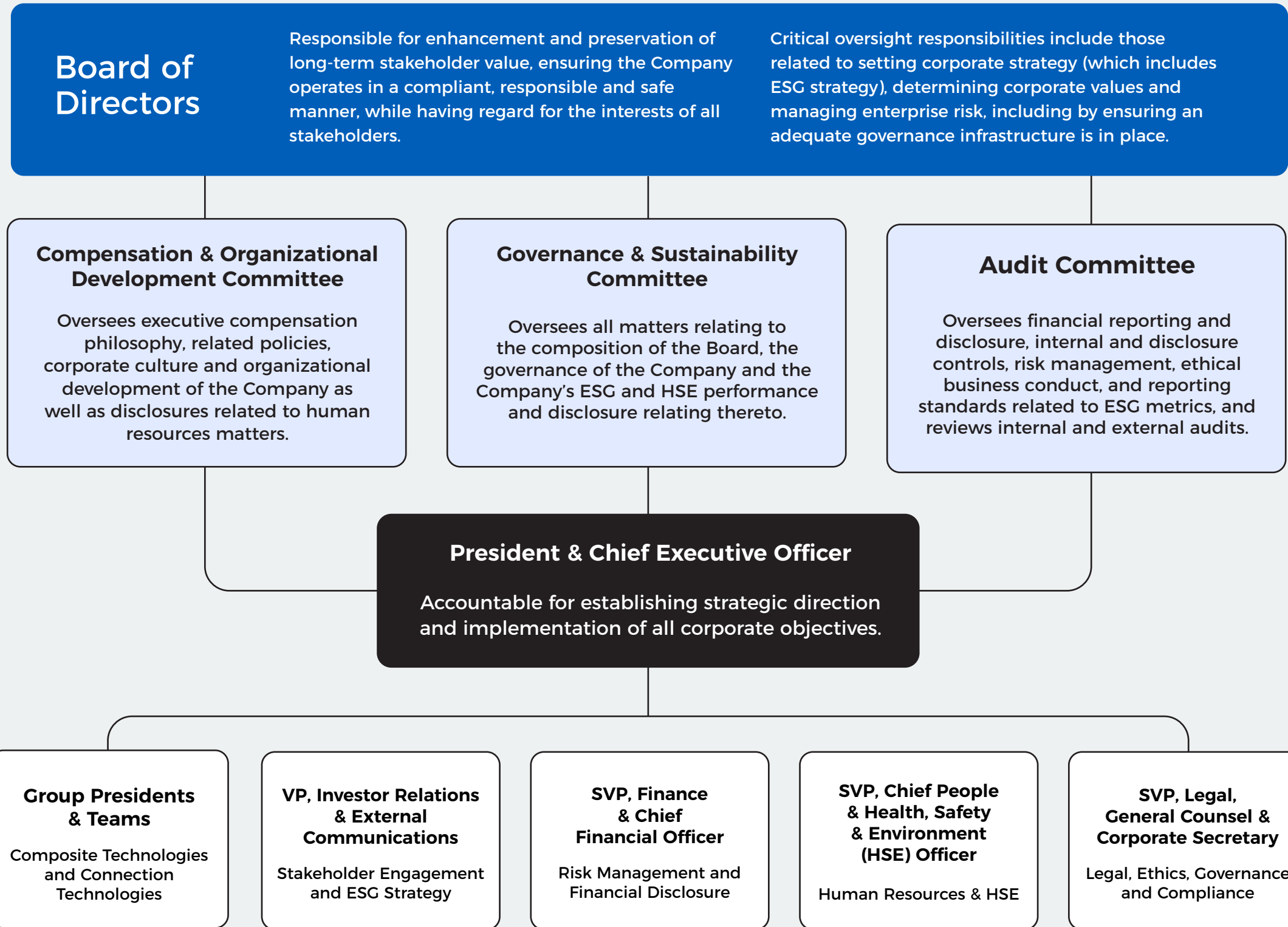
More specifically, we follow the Corporate Standard under the GHG Protocol for determining our energy consumption and Scope 1 and 2 emissions and the Corporate Value Chain (Scope 3) Standard, also under the GHG Protocol, for determining Scope 3 emissions from the sources which we disclose. Our Scope 3 disclosed data is limited to Category 6 (business travel) data and only includes air travel booked through our Company’s travel platform.

Historical GHG data is updated annually, in alignment with the GHG Protocol, to reflect acquisitions and divestitures completed by the Company before December 31, 2025. As such, historical GHG data in this report has been restated to include the AmerCable business, which was acquired in January of 2025, and to exclude the Thermotite do Brazil business, which was sold in June of 2025. Updates also incorporate changes to methodology, standards, and accuracy improvements. Additionally, we continue to update our systems to improve both data accuracy and timeliness of data delivery.

GHG data also includes contributions from our newly established production facilities in Rockwall, Texas; Blythewood, South Carolina; Fairfield, Ohio; and Vaughan, Ontario. These facilities came online in 2024 and have been progressively increasing activity levels throughout the reported period.

Improvements have been made to our GHG emissions reporting platform, allowing some, but not all, invoice data entry to be automated. Minor adjustments to historical data have been made because of this update. There is a potential that minor discrepancies in the data exist because of errors in data entry, particularly where manual entry processes still exist.

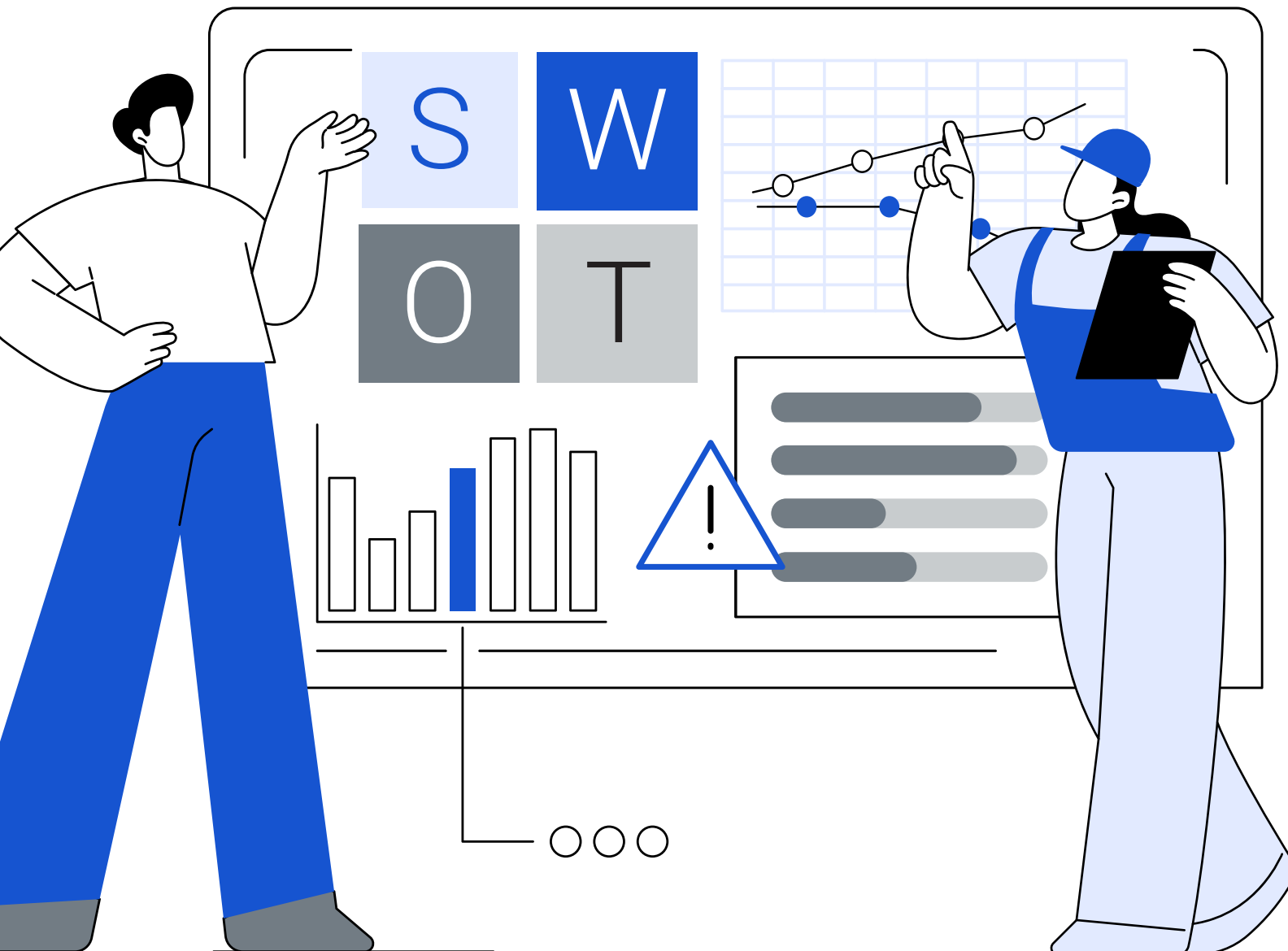




Governance

The mandate of Mattr's Board of Directors specifies the board's role in overseeing ESG matters.

Key responsibilities include reviewing and guiding the integration of ESG-related opportunities and risk management strategies with the Company's broader corporate strategy. Further information on Board and committee mandates relating to ESG can be found on our [Investor Centre](#).



Risk Management

Mattr’s Enterprise Risk Management (ERM) process is the central framework used for identifying, assessing, monitoring, prioritizing, and managing key risks.

Identification and Assessment of Risks and Opportunities

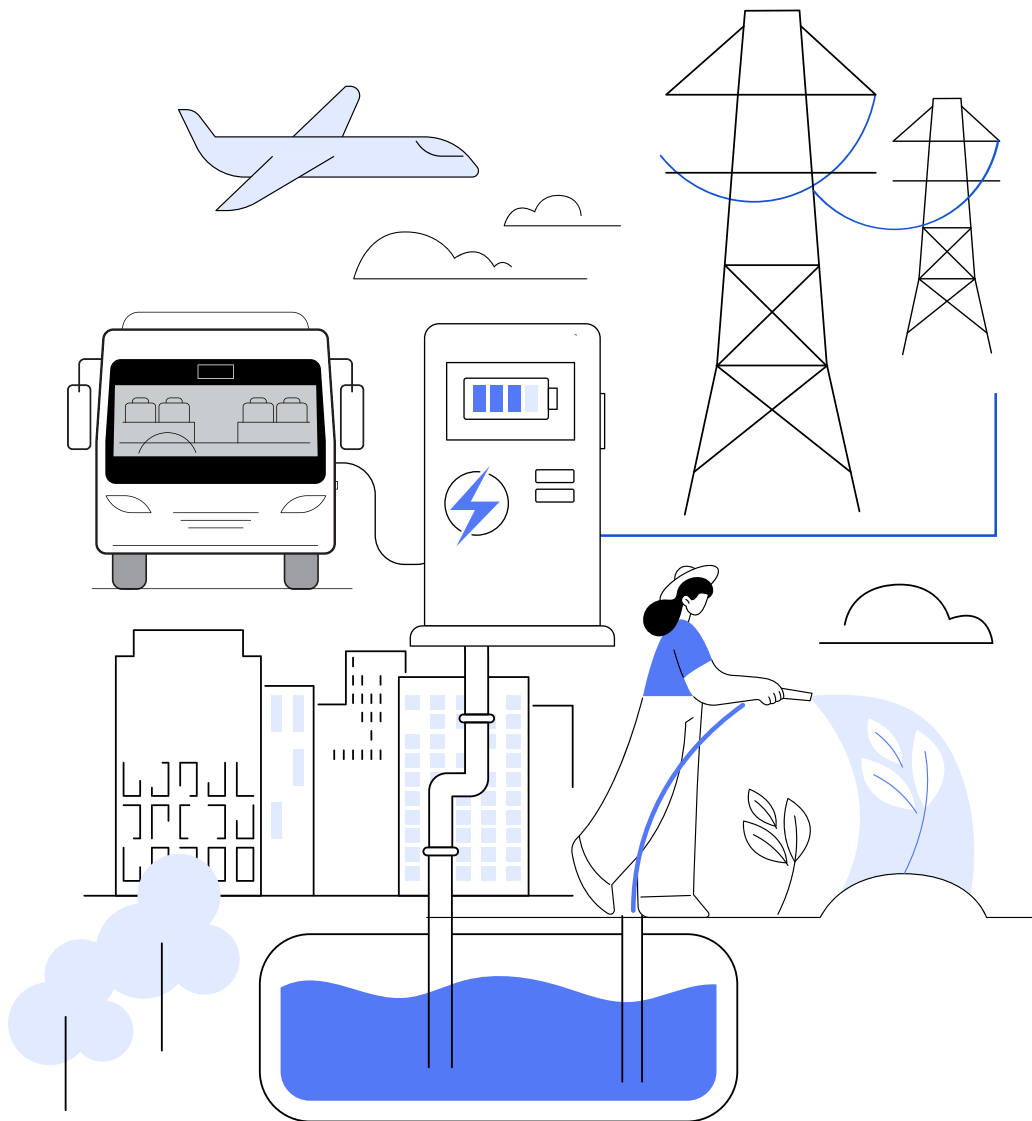
Key risks are identified annually and reviewed quarterly, with risk registers updated at least twice a year by the designated risk owners. Risks are evaluated based on severity, likelihood, and velocity¹, supported by additional indicators and interdependencies. Mitigation strategies are implemented for key risks using approaches such as prevention, avoidance, mitigation, transfer, or acceptance as applicable.

Monitoring and reporting occur quarterly, with updates documented in the ERM Risk Register and presented to the Executive Leadership Team and Board of Directors. This process integrates ESG considerations, such as environment, social, and compliance-related risks, into governance and decision-making, reinforcing resilience and alignment with regulatory expectations.

1. Risk velocity is the speed, or the length of time taken for a risk to move from the initial causes through to experiencing the negative impacts with a rating of high, medium, or low.

Risk Management

Opportunities Identified



Aging Infrastructure


Matrr’s high-quality products support the development of resilient electrical utility infrastructure, power generation and transmission systems, transportation networks, aerospace technologies, and communication networks.

Electrification

Matrr’s high-quality products facilitate expanded access to power and electricity by supporting energy supply networks, data centers, equipment digitization, automation, EV infrastructure, and mineral extraction.

Resource Scarcity

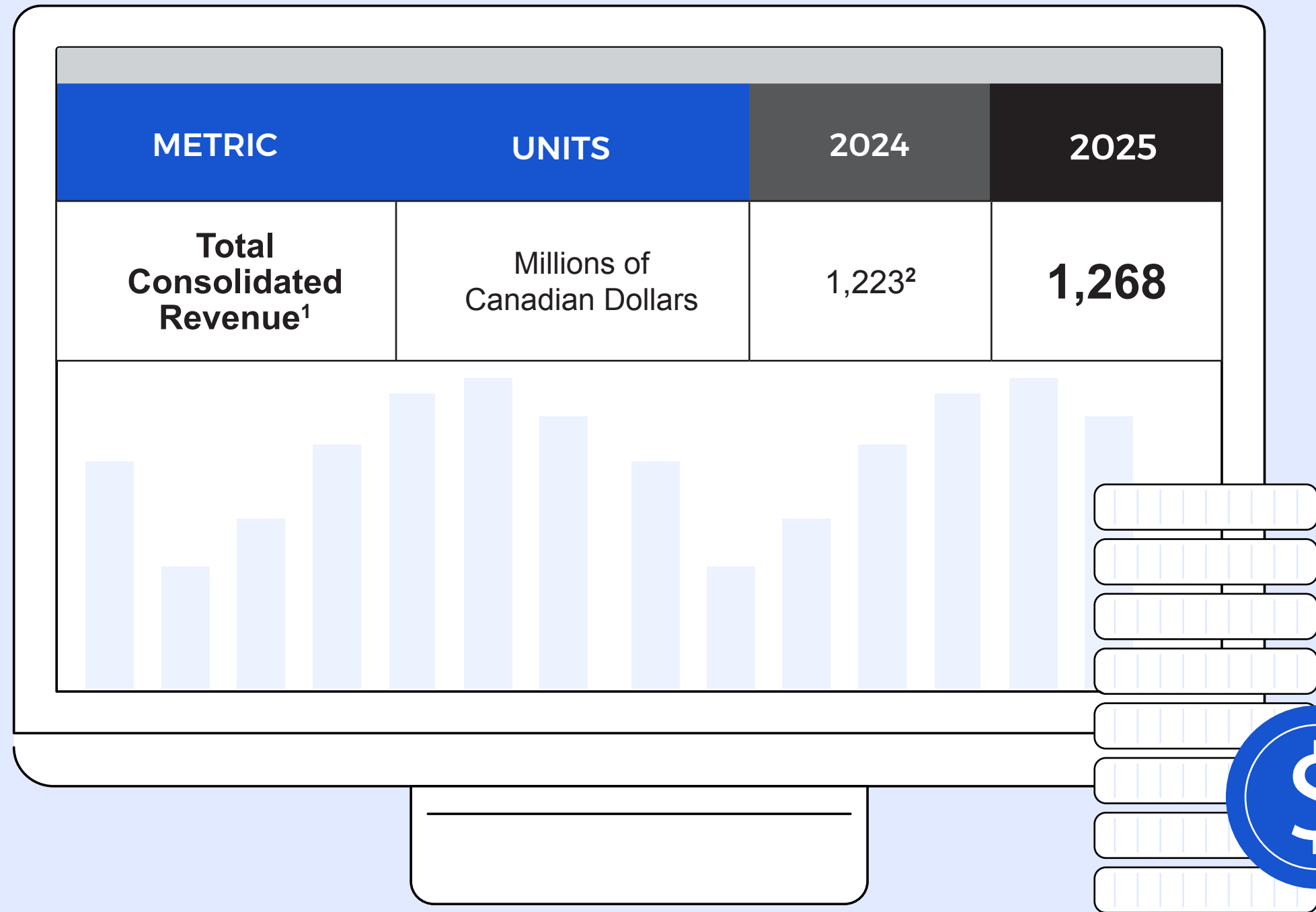
Water and energy security are key concerns globally. We offer products that support stormwater and wastewater management systems, as well as industries such as nuclear, mining, petrochemical, solar, wind, geothermal, and hydropower.

An illustration on a blue background showing a person in a white shirt and black pants crouching and holding a large white umbrella. To the left of the person is a white warning triangle with a black exclamation mark. The background features stylized clouds and a staircase-like shape.

Risks Identified

Several potential ESG-related risks have been identified through Matrr’s ERM process. These risks include the physical impacts from severe and changing weather patterns, as well as risks associated with an evolving regulatory landscape and supply chain vulnerabilities. Further details regarding our risks and mitigation strategies can be found in our [2025 Annual Information Form](#) (available on SEDAR+).

Revenue

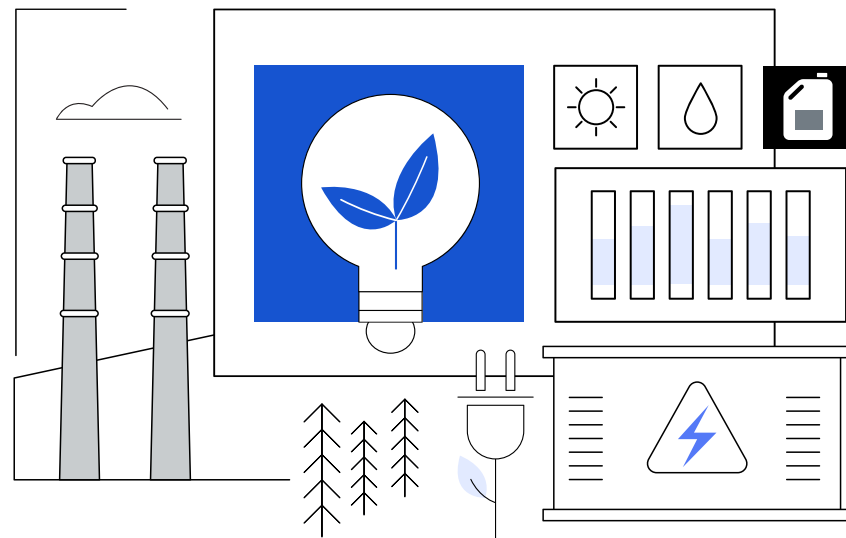


1. Revenue includes contributions from Shawflex, DSG-Canusa, AmerCable, Flexpipe and Xerxes. For more details on the Company's financial information, refer to our financial statements for the relevant year, which can be found on SEDAR+ at www.sedarplus.ca.

2. Proforma Company revenue as if AmerCable was included in the portfolio in 2024.

Environmental Metrics

Resource Use^{1,2,3}



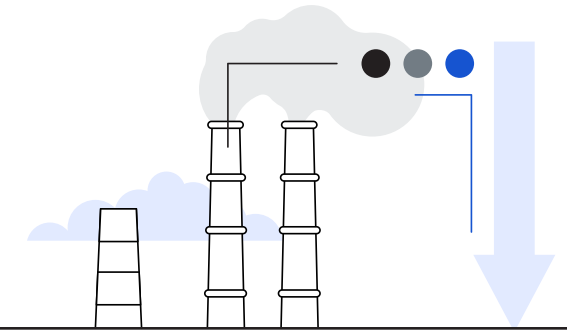
1. This report includes restated energy use and emissions data for 2025, resulting from adjustments associated with structural changes to the business including acquisitions and divestitures and methodology improvements/error corrections.

2. Values are based on internally generated information that has not been verified by a third-party.

3. Intensity values are calculated using the “Total Consolidated Revenue” values noted on [page 11](#).

METRIC	DESCRIPTION	2024	2025
Electricity	Gigajoules (GJ) of electricity consumed	188,269	184,213
<i>Renewable Sources</i>	GJ of electricity consumed	76,504	73,376
<i>Non-renewable Sources</i>	GJ of electricity consumed	111,765	110,838
Natural Gas	GJ of natural gas consumed	159,962	172,388
Diesel	GJ of diesel consumed	6,951	6,186
Propane	GJ of propane consumed	5,783	5,318
Gasoline	GJ of gasoline consumed	486	595
Total Energy Used	GJ of energy consumed	361,452	368,700
<i>Renewable Sources</i>	GJ of energy consumed	76,504	73,376
<i>Non-renewable Sources</i>	GJ of energy consumed	284,947	295,325
Energy Intensity Ratio	GJ of energy consumed per \$1M of revenue	296	291
Water Consumption	Megalitres	285	248

Environmental Metrics



Emissions^{1,2,3}

1. This report includes restated energy use and emissions data for 2025, resulting from adjustments associated with structural changes to the business including acquisitions and divestitures and methodology improvements/error corrections.

2. Values are based on internally generated information that has not been verified by a third-party.

3. The presented GHG data was calculated based on the GHG Protocol’s Corporate Standard, following the operational control approach for establishing our organizational boundary.

4. “Location-based Scope 2 emissions” calculation utilizes emission factors for all facilities, including facilities where market-based agreements are in place, for comparison and transparency. Our location-based emission factors are derived from the Environmental Protection Agency (EPA)’s eGRID database (for USA facilities), Canada’s National Inventory (for Canadian facilities), and guidance from the International Energy Agency (for international facilities).

5. “Market-based Scope 2 emissions” calculation utilizes emission factors from specific market-based agreements in place at various Matrr facilities (such as renewable energy contracts and power purchase agreements) and location-based emission factors for all other facilities utilizing grid electricity. The Company had contractual power agreements at its Suzhou (China), Rockwall (USA) and Rheinbach (Germany) facilities in 2025. As such, emission factors associated with these sites have been adjusted under the “market-based approach” to reflect the emission factors from these contractual instruments. Data for all other facilities maintains location-based emission factors.

6. Matrr follows the Corporate Value-Chain (Scope 3) Standard for Scope 3 data. Reported “Scope 3 emissions” include air travel booked through the Company travel system only. Air travel data for part of 2025 was estimated due to a mid-year vendor transition and associated data limitations.

7. Reported “Aggregated Scope 1 & 2 Emissions” value includes the Company’s Scope 1 Emissions and Scope 2 Emissions adjusted for market-based emission factors as described in footnote 5.

8. Intensity values are calculated using the “Total Consolidated Revenue” values noted on [page 11](#).

METRIC	DESCRIPTION	2024	2025
Scope 1 Emissions	Metric tonnes of CO ₂ e emitted globally	8,879	9,457
Location-based Scope 2 Emissions⁴	Metric tonnes of CO ₂ e emitted globally using location-based factors	16,149	15,304
Market-based Scope 2 Emissions⁵	Metric tonnes of CO ₂ e emitted globally adjusted for market-based emission factors where appropriate	13,172	11,727
Scope 3 Emissions⁶	Metric tonnes of CO ₂ e emitted globally from air travel booked through the Company’s travel platform	2,067	2,435
Aggregated Scope 1 & 2 Emissions⁷	Metric tonnes of CO ₂ e emitted (Scope 1 and Scope 2) globally	22,051	21,184
Emissions Intensity Ratio⁸	Metric tonnes of CO ₂ e emitted (Scope 1 and Scope 2) per \$1M in revenue	17	17

Social Metrics

Health & Safety^{1,2,3}



1. Values are based on internally generated information that has not been verified by a third-party.

2. Health and safety statistics for each year include statistics for all businesses and sites active within the organization for at least a portion of that year. There is no restatement for acquisitions or divestitures within the health and safety statistics.

3. Our performance metrics that include “employees” refers to direct employees under the Company’s supervision and control. This excludes contract personnel unless they are directly supervised by the Company and are included in the Company’s payroll system.

4. 2024 data does not include AmerCable metrics.

5. All 2025 data includes contributions from AmerCable (acquired in January 2025) which has a significant headcount, except HPCF and vehicle incident rate.

METRIC	UNITS	2024 ⁴	2025 ⁵
Fatalities	-	0	0
Total Recordable Case Frequency (TRCF)	Total recordable cases / total working hours x 1,000,000 hours	2.1	5.8
Total Recordable Incident Rate (TRIR)	Number of recordable work-related injuries / number of hours worked x 200,000 hours	0.4	1.2
Lost Time Case Frequency (LTCF)	Number of lost working days associated with a reported work-related injury or illness / number of hours worked x 1,000,000 hours	0.2	2.1
High Potential Case Frequency (HPCF)	Total number of high potential cases / number of hours worked x 1,000,000 hours	0.5	1.5
Formal Corporate HSE Audits Conducted	-	10	9
Internal Inspections Conducted	-	707	866
Employee Observations Submitted	-	16,329	23,194
Hours Worked	-	4,315,617	4,658,002
Training Hours Logged	-	25,521	16,918
Training Hours	Per thousand work hours	5.9	3.6
Vehicle Incident rate	Total vehicle incidents / number of miles driven x 1,000,000 miles	0.0	1.4
Most Frequent Injury Types	-	Strain/Sprain, Laceration, Abrasion	Strain/Sprain, Laceration, Burn
Most Frequent Injury Location	-	Head, Eye, Back	Fingers, Hand, Back

Social Metrics

Diversity^{1,2,3,4}



1. Values are based on internally generated information that has not been verified by a third-party.

2. The reported number of employees is the employee headcount for the fiscal year ended December 31, 2025. Employee breakdown by gender, age and country now includes all Mattr employees, both salaried and hourly.

3. Our performance metrics that include “employees” refers to direct employees under the Company’s supervision and control. This excludes contract personnel unless they are directly supervised by the Company and are included in the Company’s payroll system.

4. People data has not been restated to account for acquisitions or divestitures.

5. New hires is calculated as the sum of hires in a calendar year/ headcount at the end of December in that year.

6. Turnover is calculated as the sum of employee departures in a calendar year/headcount at the end of December in that year.

METRIC	2024	2025
Female Diversity by Country		
Canada	21%	22%
United States of America	20%	18%
China	37%	37%
Other	14%	14%
Total Female Employees	20%	19%
Employee Age		
Aged 30 or Less	15%	15%
Aged Between 30 – 50	55%	56%
Aged over 50	30%	29%
Human Capital		
New Employee Hires ⁵	32%	23%
Employee Turnover ⁶	30%	24%
Frontline Management Training (number of participants)	117	102
Financial Literacy Training (number of participants)	104	27

Social Metrics

Diversity^{1,2,3,4} (cont.)



1. Values are based on internally generated information that has not been verified by a third-party.

2. The reported number of employees is the employee headcount for the fiscal year ended December 31, 2025. Employee breakdown by gender, age, and country accounts for salaried and hourly force.

3. Our performance metrics that include “employees” refers to direct employees under the Company’s supervision and control. This excludes contract personnel unless they are directly supervised by the Company and are included in the Company’s payroll system.

4. People data has not been restated to account for acquisitions or divestitures.

5. Board diversity data is for the fiscal year ended December 31, 2025. These yearly figures may be post-dated in other annual documents (e.g., [2026 Management Information Circular](#) available on SEDAR+) to show updated figures as per their review cycles.

METRIC	2024	2025
Board Diversity⁵		
Female	43%	50%
Persons with Disabilities	0%	0%
Indigenous Persons	0%	0%
Visible Minorities	14%	13%
Executive Diversity		
Female	39%	32%
Persons with Disabilities	6%	5%
Indigenous Persons	0%	0%
Visible Minority	28%	11%
Total Diversity in Senior Management	56%	42%
Board Tenure		
0-3 years	43%	38%
4-7 years	57%	62%
8-11 years	0%	0%
12+ years	0%	0%
Board Age		
<55	29%	25%
55-60	14%	12%
61-65	14%	38%
66+	43%	25%

SASB Disclosure Topics & Metrics

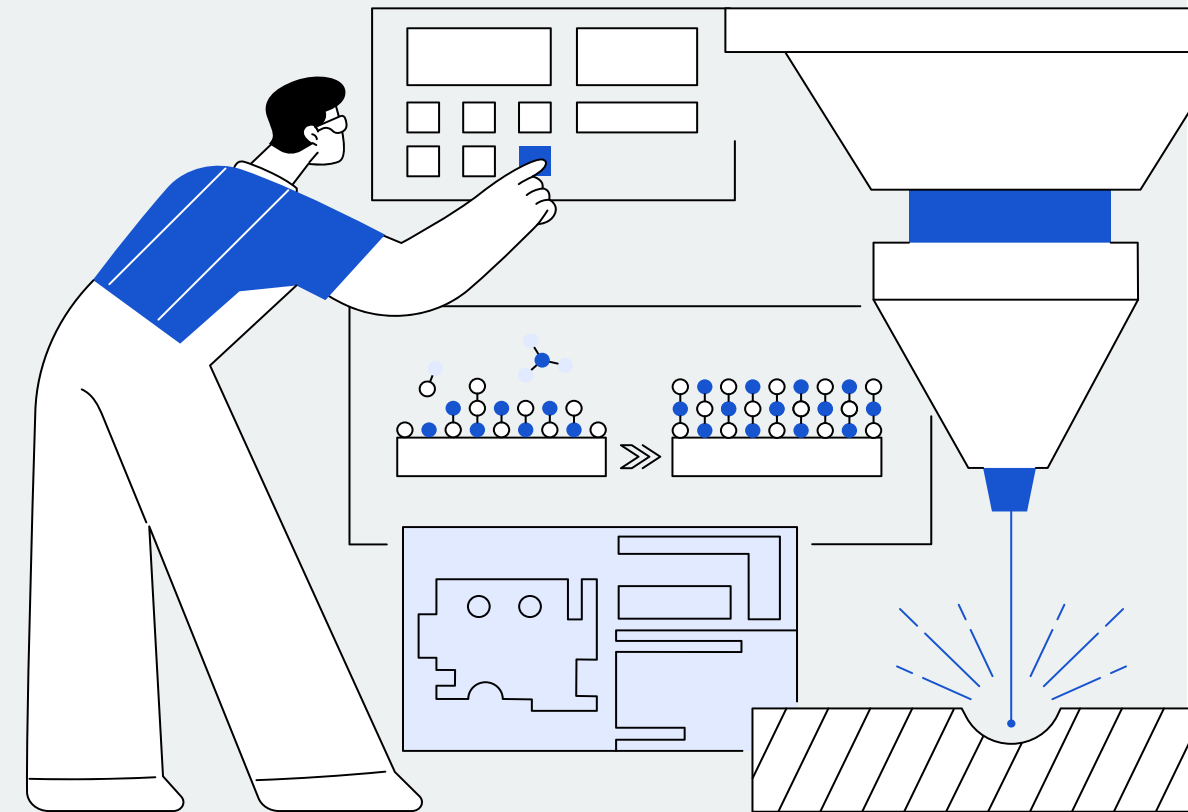
Resource Transformation Sector: Industrial Machinery & Goods

The following table discloses our alignment to SASB’s sector-specific standard for Mattr. Since our core business focuses on **manufacturing industrial products** and **advanced materials technology**, we leverage the following SASB industry code: Resource Transformation Sector: Industrial Machinery & Goods.

This sector standard is designed to address applicable issues of a typical company in the industry. Applicable disclosures associated with “Product Design & Lifecycle Management” are not included in this report because they are not relevant to the Company’s core business activities. The Company’s fleet size and use of stationary generators is de minimis. As our business model evolves, we will continue to assess the applicability and materiality of these metrics in future reports.

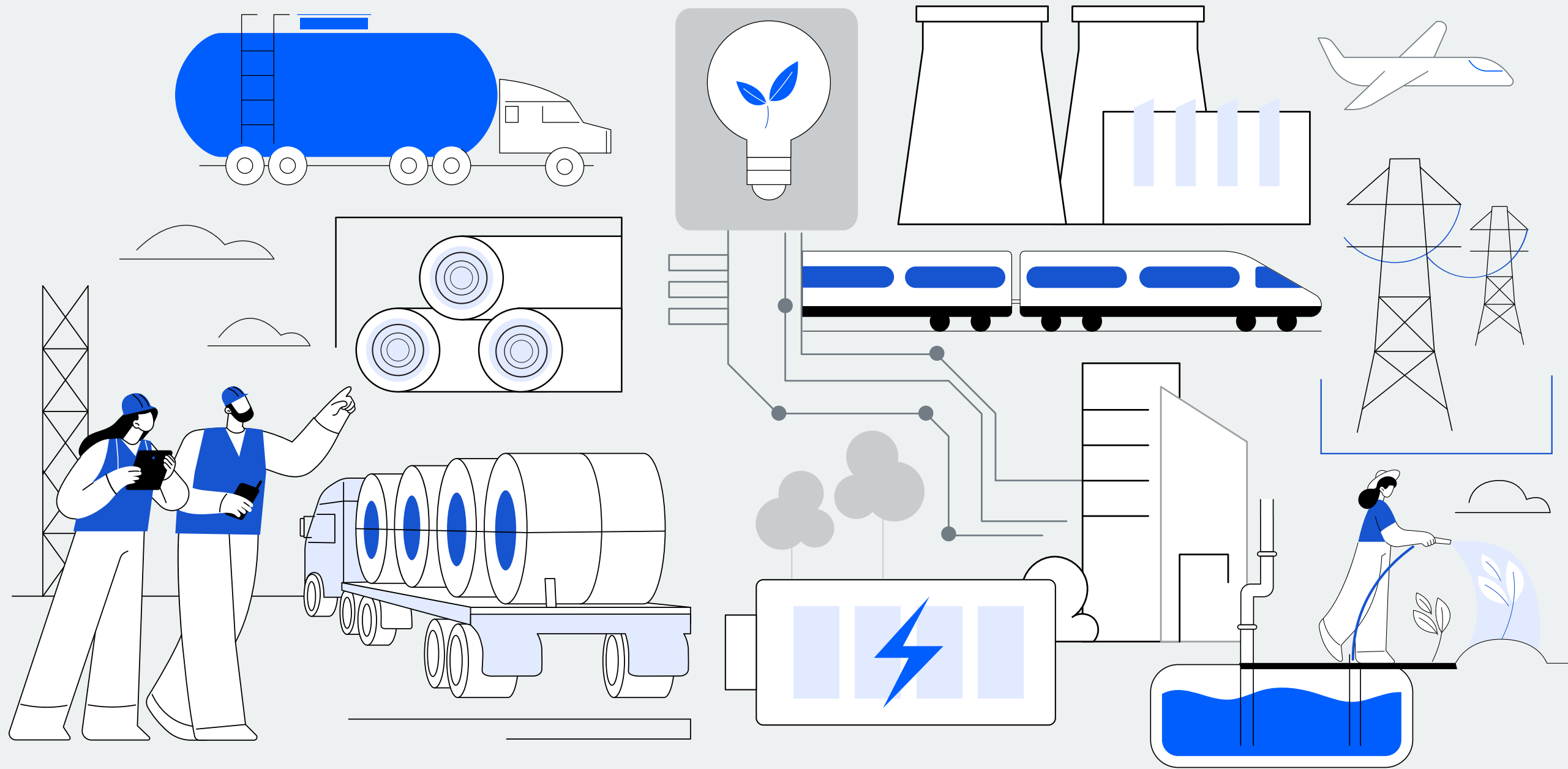
The table highlights the industry-specific issues set by SASB standards that are deemed most relevant to our investors:

- 1. Energy Management
- 2. Employee Health & Safety
- 3. Materials Sourcing & Efficiency



SASB Disclosure Topics & Metrics (cont.)

Topic	Topic Category	Units of Measure	Code	Reference
Energy Management	(1) Total energy consumed, (2) percentage grid electricity, and (3) percentage renewable	Quantitative (Gigajoules (GJ), Percentage (%))	RT-IG-130a.1	2025 ESG Progress Report data table on page 12
Workforce Health & Safety	(1) Total recordable incident rate (TRIR), (2) fatality rate, and (3) near miss frequency rate (NMFR) for (a) direct employees and (b) contract employees	Quantitative (Rate)	T-IG-320a.1	2025 ESG Progress Report data table on page 14 . Matrr does not currently disclose its Near Miss Frequency Rate (NMFR). We follow OSHA regulations regarding incident reporting, including near misses. We encourage all employees to report near misses immediately to their supervisor, just as they would have an accident. We use insights gained from both leading and lagging indicators, including near miss reports, to inform our safety programs and procedures. This ongoing effort ensures a safe working environment for all employees. While we do not currently disclose the NMFR, we believe established metrics like the Total Recordable Case Frequency (TRCF) and Total Recordable Incident Rate (TRIR) provide a solid foundation for understanding our overall safety performance.
Materials Sourcing	Description of the management of risks associated with the use of critical materials	Discussion and Analysis	RT-IG-440a.1	2025 Fourth Quarter Management’s Discussion and Analysis pages 39-45
Remanufacturing Design & Services	Revenue from remanufactured products and remanufacturing services	Quantitative (Presentation currency)	RT-IG-440b.1	The Company does not provide remanufactured products or remanufacturing services.
Activity	Metric Category	Units of Measure	Code	Reference
Number of Units Produced by Product Category	Quantitative	Number	RT-IG-000.A	100% of our products are classified as parts and components. The Company does not disclose units produced for competitive purposes.
Number of Employees	Quantitative	Number	RT-IG-000.B	2025 ESG Progress Report page 4



2025 ESG PROGRESS REPORT

www.mattr.com